

# ACX2 Pilot Pressure Supply Unit

## Description

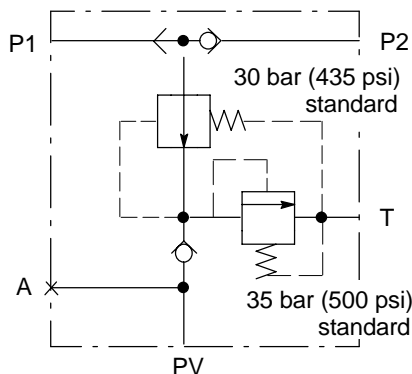
The ACX2 pilot pressure supply unit is used to feed one or more Vickers HRC or other similar hydraulic remote controls. It maintains pilot pressure within pre-set limits when inlet pressure varies above the minimum set reduced pressure.

Two parallel-connected inlet ports with integral shuttle valve allow the supply to be drawn from one or two sources.

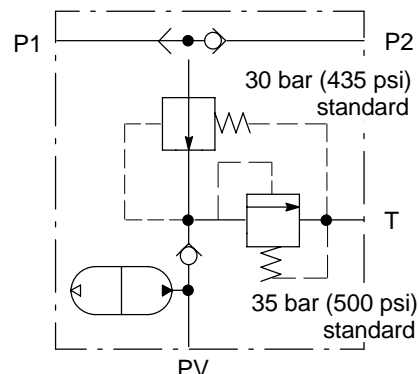
ACX2 supply units are available with or without an integral nitrogen-loaded accumulator, the latter also allowing operation for short durations when the vehicle engine is idle.

## Functional Symbols

Standard models without integral accumulator



Standard models with integral accumulator



Alternative accumulator capacities available, see "Model Code".

## Model Code

ACX2- \*\* -B- 1\*



### 1 Accumulator hydraulic capacity

WA= Without accumulator

35 = 0,35 litres (21 in<sup>3</sup>)

70 = 0,70 litres (42.7 in<sup>3</sup>)

### 2 Design number, 10 series

Subject to change. Installation dimensions unaltered for design numbers 10 to 19 inclusive.

## Operating Data

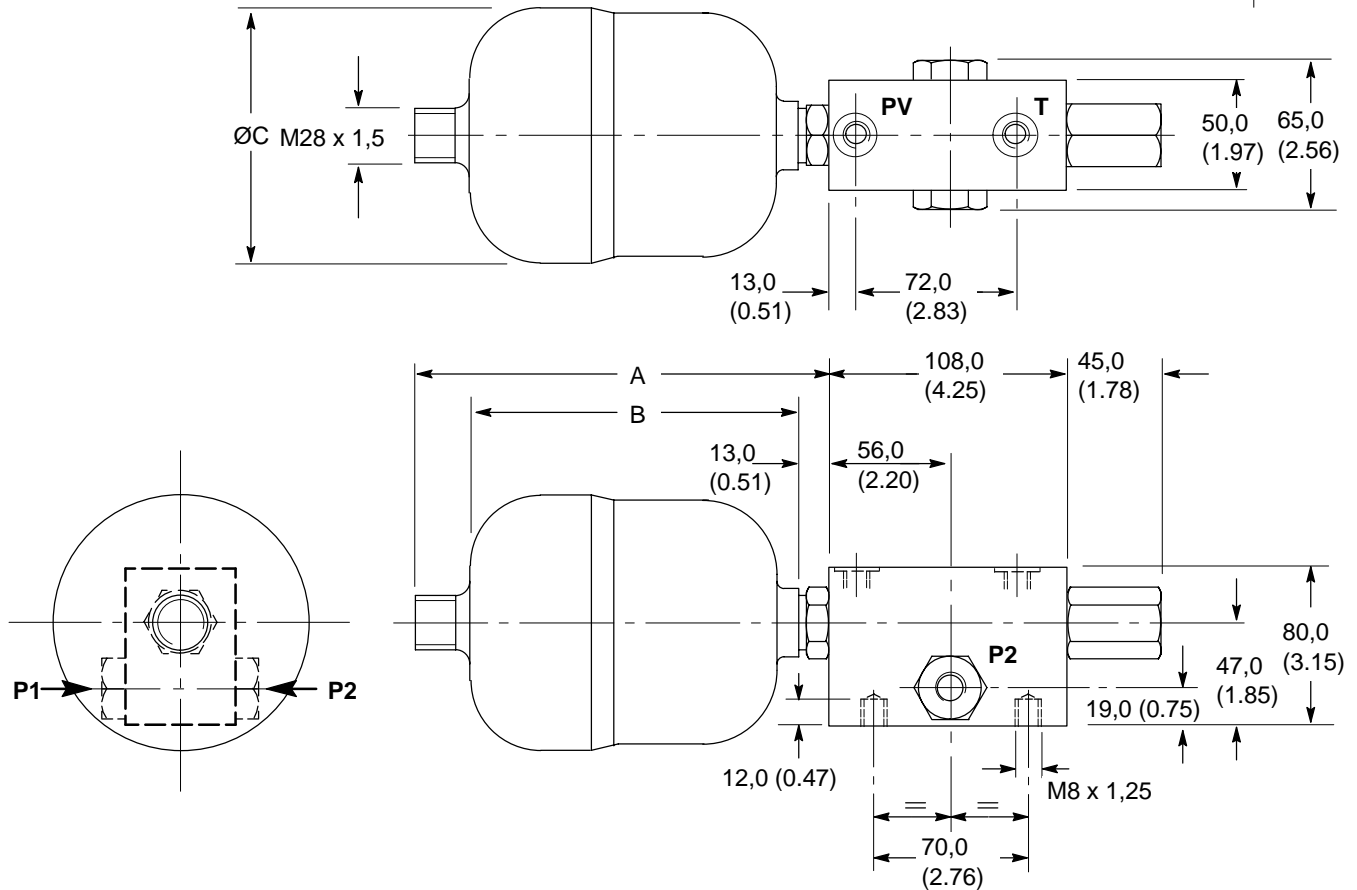
Maximum inlet pressure, ports P1 and P2	350 bar (5075 psi)
Standard controlled pressure limits, port PV: By reducing function By relief function	30 bar (435 psi) 35 bar (508 psi)
Maximum permissible pressure, port PV: With integral accumulator Without integral accumulator	100 bar (1450 psi) 150 bar (2175 psi)
Maximum pressure, port T	2 bar (29 psi)
Rated flow	25 L/min (6.6 USgpm)
Maximum transient flow rate	45 L/min (11.9 USgpm)
Accumulator characteristics: Inert gas pre-charge Standard pre-charge pressure	Nitrogen 13 bar (188 psi)
Capacity options (at zero pressure)	See "Model Code" <a href="#">1</a>
Hydraulic fluids	Antiwear hydraulic oils or crankcase oils to SC, SD, or SE classes of SAE J183. The extreme viscosity range is from 380 to 6,4 cSt (1761 to 48 SUS) but the optimum operating range is from 40 to 16 cSt (186 to 81 SUS).
Temperature ranges: Ambient Max. fluid range	–15° to 60°C (5° to 140°F) –15° to 80°C (5° to 176°F) <b>Note:</b> It is preferable that ACX2 units are installed away from any source of direct heat.
Filtration recommendations	ISO 4400 20/16
Installation dimensions	See next page
Mass, approx: ACX2-WA ACX2-35 ACX2-70	1,8 kg (4.0 lb) 4,2 kg (9.3 lb) 4,8 kg (10.6 lb)
Mounting attitude, all models	Unrestricted
Installation and start-up, accumulator models	<p>These are shipped with accumulator pre-charged with nitrogen to a specified pressure. The pre-charge should not normally need initial re-adjustment unless a different pre-charge pressure is needed for the application. If necessary, users can alter the pre-charge pressure by temporarily fitting an appropriate charging device jointly to the gas port and a nitrogen bottle, then carefully adjusting the pre-charge within appropriate limits.</p> <p>If the accumulator is empty of oil when starting, a back pressure of at least 8 bar (116 psi) is needed at outlet PV to assist filling with oil. This is usually attained by running the engine-driven pump(s) at high speed for 10 to 15 seconds.</p>

## Installation Dimensions in mm (inches)

### ACX2-\*\*-B

#### Models with Accumulator

3rd angle projection



Model	A	B	C	P1, P2 & PV	T
ACX2-35-B	153 (6.03)	118 (4.65)	92 (3.63)	G <sup>1</sup> / <sub>4</sub> " x 12 (0.47) deep	G <sup>3</sup> / <sub>8</sub> " x 12 (0.47) deep
ACX2-70-B	194 (7.64)	142 (5.60)	116 (4.57)	G <sup>1</sup> / <sub>4</sub> " x 12 (0.47) deep	G <sup>3</sup> / <sub>8</sub> " x 12 (0.47) deep

#### Models without Accumulator

Other dimensions as above

